

iDTRONIC SILICONE



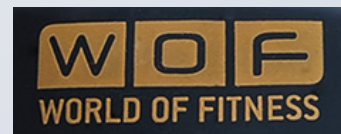
	SPORTS	RUBBER	TAG	SMART	FIT	SLIM
Dimensions	157 mm Ø (Children) 180 mm Ø (Women) 195 mm Ø (Men) 215 mm Ø (XL) 235 mm Ø (XXL)	55 mm Ø (Children) 65 mm Ø (Women) 70 mm Ø (Men) 74 mm Ø (XL)	180 mm Ø (Women) 195 mm Ø (Men) 210 mm Ø (XL)	55 mm Ø (Children) 65 mm Ø (Women) 70 mm Ø (Men) 74 mm Ø (XL)	60 mm Ø (Children) 64 mm Ø (Teenagers) 67 mm Ø (Adults)	45 mm Ø (Children) 50 mm Ø (Teenagers) 60 mm Ø (Adults)
Material	Silicone / PCB-Inlay (12 × 18 mm)	Silicone / PCB-Inlay (Ø 23,5 mm)	Silicone / Round PPS Tag (Ø 20 mm)	Silicone / PCB-Inlay (12 × 18 mm)	Silicone / Black Tag (Ø 20 mm)	Silicone / PCB-Inlay (12 × 18 mm)
Printable area	58 x 17 mm (L×W)	21,4 × 12 mm (L×W)	35 × 21,5 mm (LxW)	82 × 19 mm (LxW)	70 × 20 mm (LxW)	50 × 12 mm (LxW)
Order Codes	WB-SP-xx	WB-RU-xx	WB-TAG-xx	WB-SMA-xx	WB-FIT-xx	WB-SLIM-xx
Chip-Options	<p>HF: NXP MIFARE Classic 1K / 4K NXP DESFire EV 3 2K / 4K / 8K NXP MIFARE Ultralight NXP I-Code SLI / SLI-X Tag-it HF-I Fudan F08 LEGIC MIM256 NXP NTAG 213 / 215 / 216</p> <p>LF: EM 4200 Atmel Temic 5577 NXP Hitag 1 / S2048</p>					

COLORS

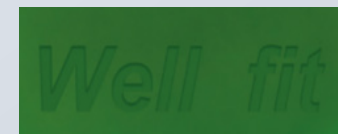
PANTONE 361 C	PANTONE 102 C	PANTONE 021 C	PANTONE 485 C
PANTONE 2592 C	PANTONE 1915 C	PANTONE 304 C	PANTONE 284 C
PANTONE 286 C	PANTONE BLACK C	PANTONE COOL GREY 11 C	WHITE

ALL OTHER CUSTOM COLORS PER REQUEST

PERSONALIZATION OPTIONS



Logo produced through screen printing



Logo engraving without color fill



Logo engraving with color fill



Logo printing



Number print



Chip encoding



QR-Code print

iDTRONIC CLASP



	SPEED	CLASP	MOVE	POWER	POOL	SMOOTH
Dimensions	250 × 20 mm (L×W)	255 × 33,5 × 7 mm (L×W×D)	250 × 21 × 6 mm (L×W×D)	237 × 19 mm (L×W)	250 × 16 mm (L×W)	35 × 30 × 5 mm (L×W×D)
Material	Silicone / PBC-Inlay (12 × 18 mm) Clasp: Stainless Steel	Silicone / PCN-Inlay (Ø 20 mm) Clasp: Stainless Steel	Silicone / PBC-Inlay (12 × 18 mm)	Silicone / PBC-Inlay (12 × 18 mm) Pin: Stainless Steel	Case: ABS Bracelet: TPU Clasp: Stainless Steel	Silicone / PCB-Inlay (12 × 18 mm) Clasp: Stainless Steel
Printable area	138 × 17 mm (L×W)	130 × 29 mm (L×W)	40 × 20 mm (L×W)	32 × 12 mm (L×W)	Ø 28 mm	Ø 27 mm
Order Code	WB-SD-xx	WB-CL-xx	WB-MO-xx	WB-PO-xx	WB-POOL-xx	WB-SM-xx
Chip-Options	HF: NXP MIFARE Classic 1K / 4K NXP DESFire EV 3 2K / 4K / 8K NXP MIFARE Ultralight NXP I-Code SLI / SLI-X Tag-it HF-I Fudan F08 LEGIC MIM256 NXP NTAG 213 / 215 / 216					
	LF: EM 4200 Atmel Temic 5577 NXP Hitag 1 / S2048					

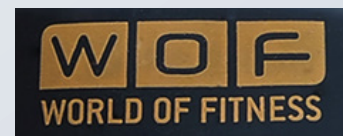
COLORS

PANTONE 361 C *	PANTONE 102 C *	PANTONE 021 C *	PANTONE 485 C *
PANTONE 2592 C	PANTONE 1915 C	PANTONE 304 C	PANTONE 284 C
PANTONE 286 C *	PANTONE BLACK C *	PANTONE COOL GREY 11 C *	WHITE *

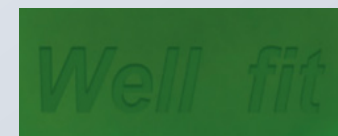
ALL OTHER CUSTOM COLORS PER REQUEST

*COLORS FOR POOL BAND

PERSONALIZATION OPTIONS



Logo produced through
screen printing



Logo engraving
without color fill



Logo engraving
with color fill



Logo printing



Number print



Chip encoding



QR-Code print

iDTRONIC MISCELLANEOUS



	EASY STRETCH	STRETCH	TYVEK	INK
Dimensions	145 × 25 × 1,5 mm (Children) 160 × 25 × 1,5 mm (Women) 185 × 25 × 1,5 mm (Men)	145 × 25 × 1,5 mm (Children) 160 × 25 × 1,5 mm (Women) 185 × 25 × 1,5 mm (Men)	250 × 19 mm ... × 25 mm ... × 30 mm	277,69 × 25 mm (L×W)
Material	Polyester / PVC-Tag (Ø 20 mm)	Polyester / Tag (Ø 20 mm)	Tear-resistant paper / Wet-Inlay (56 × 18 mm)	Thermal synthetic paper
Printable area	Band: see Dimensions Head: 42 × 26 mm (L×W)	Band: see Dimensions Head: 21,4 × 12 mm (L×W)	Complete	Complete
Order Code	WB-EASTR-xx	WB-STR-xx	WB-TYV-xx	WB-SUINK-xx
Chip-Options	Fudan F08 NXP MIFARE Classic 1K / 4K NXP MIFARE Ultralight NXP I-Code SLI / SLI-X EM 4200 NXP Hitag 1 / S2048		Fudan F08 NXP MIFARE Classic 1K / 4K NXP MIFARE Ultralight NXP I-Code SLI / SLI-X	

PRINT

- **Screenprint**
- **(EASY) Stretch bands are completely customizable inside and outside as well as the headpart with chip**

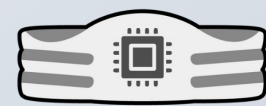
PERSONALIZATION OPTIONS



Logo printing



Number print



Chip encoding



QR-Code print